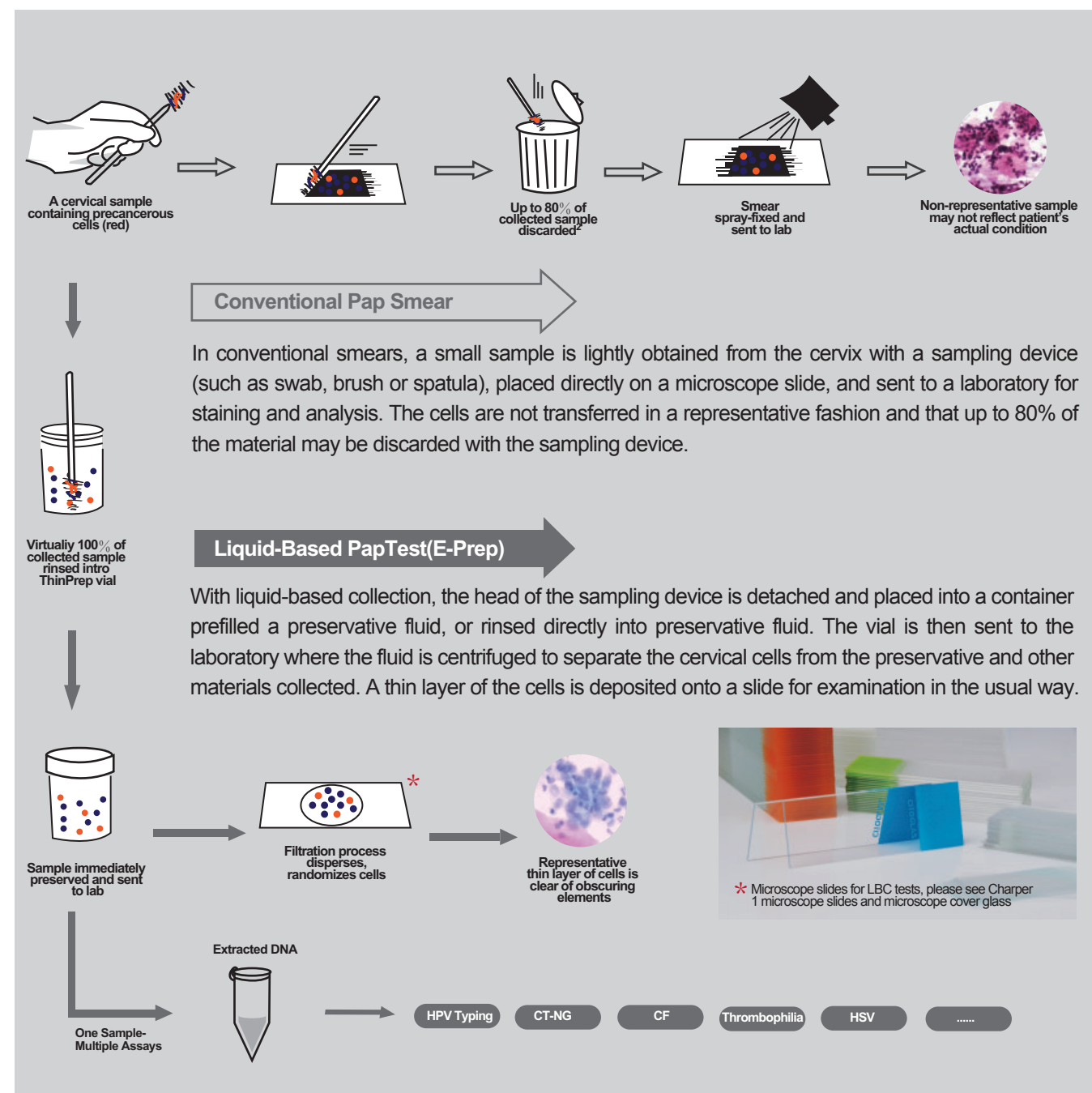
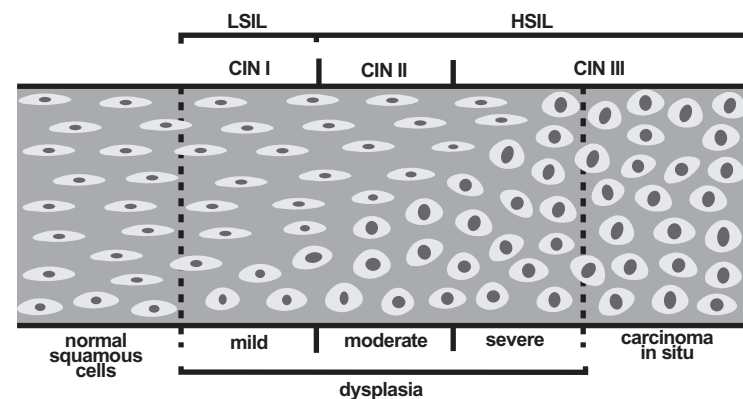


Liquid Based Cytology

Liquid based cytology (LBC) is a newer way to examine the specimen collected from a Pap smear. A Pap smear is a screening test primarily used to detect cancerous cells in the cervix, but it can also detect infections and other abnormalities. Liquid-based preparations outperform conventional smears because of improved fixation, decreased obscuring factors, and standardization of cell transfer.

Progression of Cervical Intraepithelial Neoplasia



Cytology Brush

Moulded handle, Tapered soft tips with nylon bristles, used for collecting cell samples from endocervical or buccal, applications in Pap smear tests, cervical cancer and venereal disease diagnosis

Overall length 188mm (A)
 With safety plastic ball-shaped tip Overall length 188mm (B)
 Overall length 168mm (C)

P/N	CAT.NO.	DESCRIPTION	PACKING
0010-0001	92010000	Bulk pack, non-sterile	100pcs/polybag/inner box, 50x100pcs/carton
(A) 0010-0002	92010000DR	Individual peel pack, Gamma sterile	100pcs/dispenser box, 20x100pcs/carton
0010-0003	92010000EO	Individual peel pack, E.O. Sterile	100pcs/dispenser box, 20x100pcs/carton
0010-0004	92012000	Bulk pack, non-sterile	100pcs/polybag, 50x100pcs/carton
(B) 0010-0005	92012000DR	Individual peel pack, gamma sterile	100pcs/inner box, 20x100pcs/carton
0010-0006	92012000EO	Individual peel pack, E.O. Sterile	100pcs/inner box, 20x100pcs/carton
0010-0018	-	Bulk pack, non-sterile	100pcs/polybag, 50x100pcs/carton
(C) 0010-0019	-	Individual peel pack, gamma sterile	100pcs/inner box, 20x100pcs/carton
0010-0020	-	Individual peel pack, E.O. Sterile	100pcs/inner box, 20x100pcs/carton

Cervical Brush

Various lengths of plastic hairs design, ideal for collecting cells from the entire required sampling area of the cervix, ectocervical and endocervical cells for Pap smears
 Plastic handle, with soft, flexible brush, providing more efficient sampling and reliable cell transfer

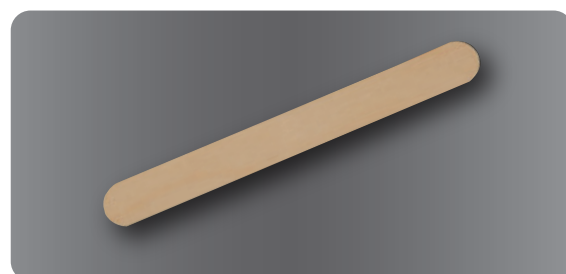
Non-sterile, bulk pack

P/N	CAT.NO.	DESCRIPTION	PACKING
(D) 0010-0007	92011000	Purple handle, over length 200mm	50pcs/polybag, 20x50pcs/carton
(E) 0010-0008	92013000	Blue handle, over length 197mm	50pcs/polybag, 20x50pcs/carton
(F) 0010-0009	92014000	Blue handle, over length 197mm	50pcs/polybag, 20x50pcs/carton

Tongue Depressor

Used as a clinical diagnostic aid, the sterile models can be used for spreading balms and ointments, for stirring liquids or mixing medicine, etc.

Made from high-quality white birch to provide smooth rounded edges, splinter-free finish, three sizes are available, all products are odour and taste-free, and maintains a high tensile strength.



100pcs/box, 50boxes/carton

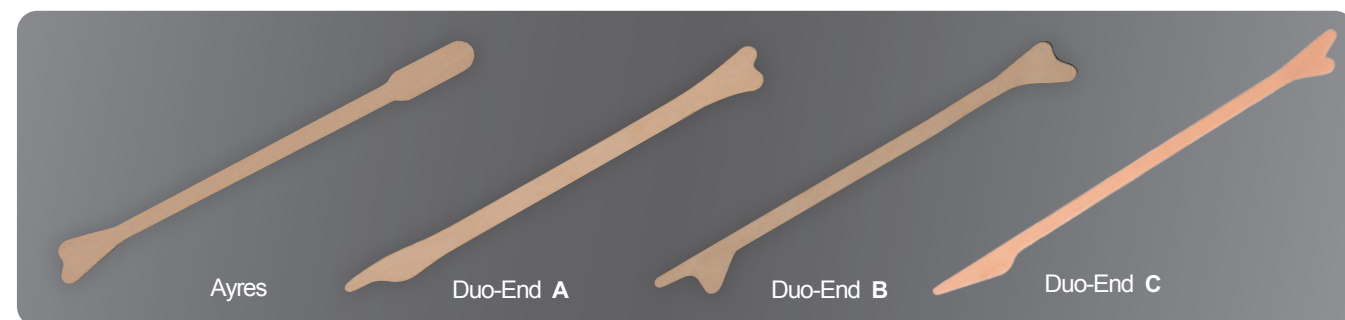
P/N	CAT.NO	DIMENSION(L×W×H, mm)	STERILE	PACKING
6940-0001	5A0006	150×18×1.6	Non-sterile	bulk
6940-0004	5A0009	150×18×1.6	E.O.	1pc/flow pack
6940-0005	5A0010	150×18×1.6	E.O.	1pc/peel pack
6940-0002	5A0007	140×16×1.6	Non-sterile	bulk
6940-0006	5A0011	140×16×1.6	E.O.	1pc/flow pack
6940-0007	5A0012	140×16×1.6	E.O.	1pc/peel pack
6940-0003	5A0008	115×10×2	Non-sterile	bulk
6940-0008	5A0013	115×10×2	E.O.	1pc/flow pack
6940-0009	5A0014	115×10×2	E.O.	1pc/peel pack

Cervical Scraper CE MDD

Wooden spatula, can be used in conventional smear, such as scraping and collection of cervical cells

High quality white birch, smoothly polished; Length 180mm, splinter free edges. Three types are available:

- Ayres scraper, designed to collect cytology specimens from the cervix and is also adaptable to collect specimens from the tongue, throat or vulva
- Duo-End Scraper, enables the clinician to use either the Ayres Tip or modified Elongated Tip, providing cell samples from both cervix and endocervix in one step
- Elongated scraper, allows deeper penetration into the endocervical area



Neutral Color, 180mm Length

Non-sterile, Bulk pack

P/N	CAT.NO.	DESCRIPTION	PACKING
0012-0001	93021000	Ayres scraper	100pcs/box, 50x100pcs/carton
0012-0003	93023000	Duo-End Scraper A	100pcs/box, 50x100pcs/carton
0012-0004	93024000	Duo-End Scraper B	100pcs/box, 50x100pcs/carton
0012-0017	-	Duo-End Scraper C	100pcs/box, 50x100pcs/carton

E.O. sterile, Individual peel pack

P/N	CAT.NO.	DESCRIPTION	PACKING
0012-0006	93021000B	Ayres scraper	100pcs/box, 50x100pcs/carton
0012-0010	93023000B	Duo-End Scraper A	100pcs/box, 50x100pcs/carton
0012-0012	93024000B	Duo-End Scraper B	100pcs/box, 50x100pcs/carton
0012-0018	-	Duo-End Scraper C	100pcs/box, 50x100pcs/carton

Disposable Pap Smear Kit NEW

Papa smear Kits is a device that provide a comprehensive solution for specimen collection and smear preparation, such as vaginal, cervical and endocervical smears are prepared on one slide for cytological examination.

The Kits contains:

- One Cytology brush (P/N 0010-0001)
- One cervical scraper (P/N 0012-0002)
- One microscope slide with frosted end (P/N 0303-2122)

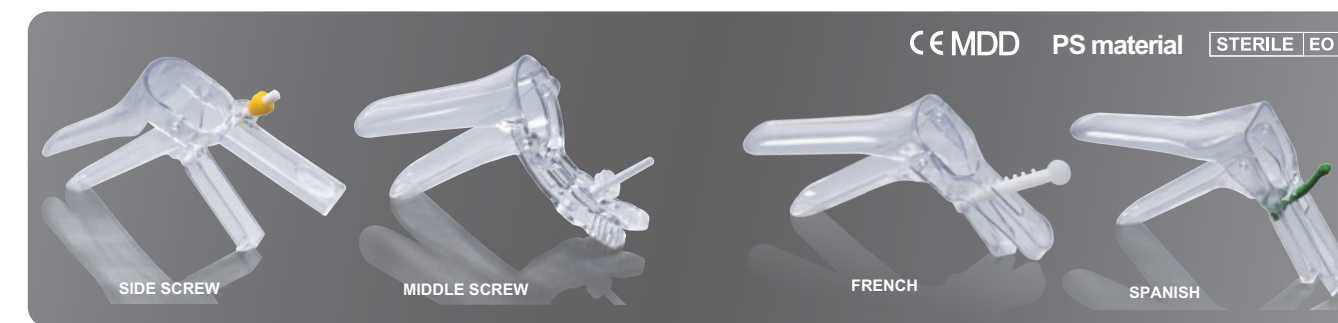


Contents can be customized according to user's specification.

P/N	DESCRIPTION	PACKING
0012-0013	Cyto brush, white birch scrape, Single frosted microscope slide	1set/polybag, 50sets/inner box, 10x50sets/carton

VAGINAL SPECULUM

Disposable bivalve speculum is designed to hold back the anterior and posterior vaginal walls after opening so that the cervix may be visualized, and has a screw for maintaining the open position during examination. Choose a speculum of appropriate size according to history such as parity, age, menopausal stage and experience from previous smear taking.



Individual flow-pack, 100 pcs/carton

P/N				TYPE
SIDE SCREW	MIDDLE SCREW	FRENCH	SPANISH	
6900-1031	6900-2031	6900-3031	6900-4031	Large
6900-1021	6900-2021	6900-3021	6900-4021	Middle
6900-1011	6900-2011	6900-3011	6900-4011	Small
-	-	6900-3001	-	Extra small

Individual peel-pack, 100 pcs/carton

P/N				TYPE
SIDE SCREW	MIDDLE SCREW	FRENCH	SPANISH	
6900-1032	6900-2032	6900-3032	6900-4032	Large
6900-1022	6900-2022	6900-3022	6900-4022	Middle
6900-1012	6900-2012	6900-3012	6900-4012	Small
-	-	6900-3002	-	Extra small

Transport Tubes

Conical bottom, self-standing tubes with screw caps, designed for preparing, transporting and storage biological material, such as blood, urine and fecal

Leak-proof test is complied with **BS EN14254** and **BS5213** strictly

- PP material, with replacement PE closure
- Shatter-proof and exposed to freezing temperature
- Withstand centrifugation up to 6000×g
- Molded graduations at 1/2mL increments
- Large marking area for labeling
- Available with sterile and non-sterile

Tube made of PP material, cap made of PE material

P/N	CAT.NO	VOL. (mL)	DIM. (mm)	PACKING
4004-1501	34330005	5	Φ16×60	100pcs/polybag, 1000pcs/carton
4004-1502	34330005s	5	Φ16×60	10×100tubes+1×1000caps/carton, caps and tubes separately packed in different polybags and in same carton
4004-1503	34330010	10	Φ16×96	100pcs/polybag, 1000pcs/carton
4004-1504	34330010s	10	Φ16×96	10×100tubes+1×1000caps/carton, caps and tubes separately packed in different polybags and in same carton
* 4004-1512	-	10	Φ16×85	100pcs/polybag, 1000pcs/carton
* 4004-1513	-	10	Φ16×85	10×100tubes+1×1000caps/carton, caps and tubes separately packed in different polybags and in same carton
* 4004-1514	-	5	Φ16×56.5	100pcs/polybag, 1000pcs/carton
* 4004-1515	-	5	Φ16×56.5	10×100tubes+1×1000caps/carton, caps and tubes separately packed in different polybags and in same carton

Replacement caps

P/N	CAT.NO	DESCRIPTION	PACKING
4071-4308-16	35500510	For 4004-1501 & 4004-1503	1000pcs/polybag, 2000pcs/carton



VOL.40 ml

Molded graduation at each 10ml up to 30ml
Dimension: Ø34 / Ø29 /H69 mm

P/N	CAT.NO.	STERILE	LID COLOR	PACKING
4020-0105-13	33101040ND	-	Red	Individual flow pack, 800pcs/carton
4020-0107-13	33101040NB	-	Red	* 1x1000cups + 2x500lids/carton
4020-0104-13	33101040SD	E.O.	Red	Individual flow pack, 800pcs/carton
4020-0105-02	33101040BD	-	Blue	Individual flow pack, 800pcs/carton
4020-0107-02	33101040BB	-	Blue	* 1x1000cups + 2x500lids/carton
4020-0104-02	33101040SB	E.O.	Blue	Individual flow pack, 800pcs/carton

VOL.60 ml

Without molded graduation
Dimension: Ø45 / Ø36 /H66 mm

P/N	CAT.NO.	STERILE	LID COLOR	PACKING
4020-0205-13	33101060ND	-	Red	Individually wrapped, 600pcs/carton
4020-0207-13	33101060NB	-	Red	* 1x1000cups + 2x500lids/carton
4020-0204-13	33101060SD	E.O.	Red	Individual flow pack, 600pcs/carton
4020-0205-02	33101060BD	-	Blue	Individual flow pack, 600pcs/carton
4020-0207-02	33101060BB	-	Blue	* 1x1000cups + 2x500lids/carton
4020-0204-02	33101060SB	E.O.	Blue	Individual flow pack, 600pcs/carton

Without molded graduation, with attached spoon

Dimension: Ø45 / Ø36 /H66 mm

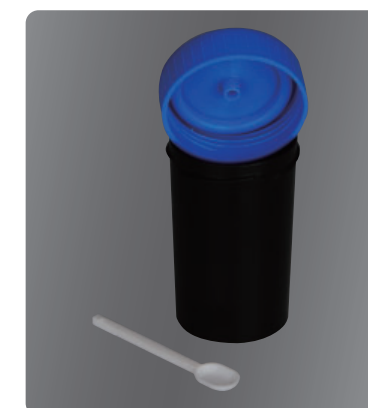
P/N	CAT.NO.	STERILE	LID COLOR	PACKING
4020-0215-13	33121060ND	-	Red	Individually wrapped, 600pcs/carton
4020-0218-13	33121060NB	-	Red	* 1x1000cups+2x500lids +1x1000spoons/carton
4020-0214-13	33121060SD	E.O.	Red	Individual flow pack, 600pcs/carton
4020-0215-02	33121060BD	-	Blue	Individual flow pack, 600pcs/carton
4020-0218-02	33121060BB	-	Blue	* 1x1000cups+2x500lids +1x1000spoons/carton
4020-0214-02	33121060SB	E.O.	Blue	Individual flow pack, 600pcs/carton

Without graduation, black cups with attached spoon

Dimension: Ø45 / Ø36 /H66 mm

P/N	CAT.NO.	STERILE	LID COLOR	PACKING
4020-0515-13	3C0040	-	RED	Individual flow pack, 600pcs/carton
4020-0518-13	3C0041	-	RED	* 1x1000cups+2x500lids +1x1000spoons/carton
4020-0514-13	3C0042	E.O.	RED	Individual flow pack, 600pcs/carton
4020-0515-02	3C0043	-	BLUE	Individual flow pack, 600pcs/carton
4020-0518-02	3C0044	-	BLUE	* 1x1000cups+2x500lids +1x1000spoons/carton
4020-0514-02	3C0045	E.O.	BLUE	Individual flow pack, 600pcs/carton

* Lids /Cups/Spoons separately packed in different polybag and in same carton



SPECIMEN CONTAINERS

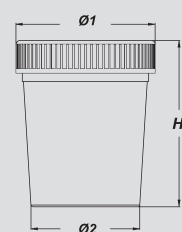
Urine and Stool Containers

CE IVD

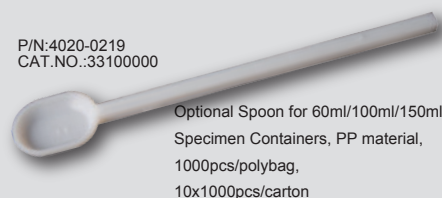
Designed to collect and store solid or liquid samples, including food, medicine, urine and feces, opaque containers ideal for photosensitive samples (e.g. urine bile pigment and porphyrin) or when it is required not to show the content

- Supplied with translucence and opaque PP material
- Optional spoon, with assorted color screw cap
- Excellent temperature and chemical resistance
- Sizes rang of 40ml, 60ml, 100ml and 150ml
- With or without molded graduation

Vol. (ml)	Φ1 (mm)	Φ2 (mm)	H (mm)
40	34	29	69
60	45	36	66
100	55	42	70
150	59	47	74



P/N:4020-0219
CAT.NO.:33100000



Optional Spoon for 60ml/100ml/150ml Specimen Containers, PP material, 1000pcs/polybag, 10x1000pcs/carton

Urine and Stool Containers CE IVD

VOL.100 ml

Molded graduation at each 20ml up to 80ml
Dimension: Ø55 / Ø42 / H70 mm

P/N	CAT.NO.	STERILE	LID COLOR	PACKING
4020-0305-13	33101100ND	-	Red	Individual flow pack, 400pcs/carton
4020-0307-13	33101100NB	-	Red	* 1x1000cups + 2x500lids/carton
4020-0304-13	33101100SD	E.O.	Red	Individual flow pack, 400pcs/carton
4020-0305-02	33101100BD	-	Blue	Individual flow pack, 400pcs/carton
4020-0307-02	33101100BB	-	Blue	* 1x1000cups + 2x500lids/carton
4020-0304-02	33101100SB	E.O.	Blue	Individual flow pack, 400pcs/carton



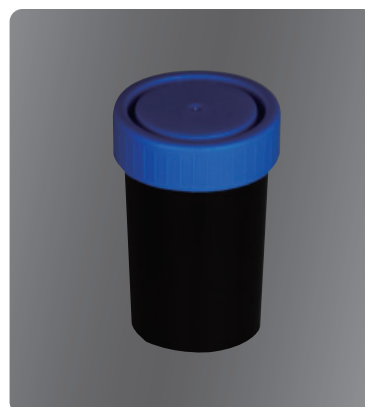
Molded graduation at each 20ml up to 80ml, with attached spoon
Dimension: Ø55 / Ø42 / H70 mm

P/N	CAT.NO.	STERILE	LID COLOR	PACKING
4020-0315-13	33121100ND	-	Red	Individually wrapped, 400pcs/carton
4020-0318-13	33121100NB	-	Red	* 1x1000cups+2x500lids +1x1000spoons/carton
4020-0314-13	33121100SD	E.O.	Red	Individual flow pack, 400pcs/carton
4020-0315-02	33121100BD	-	Blue	Individual flow pack, 400pcs/carton
4020-0318-02	33121100BB	-	Blue	* 1x100cups+2x500lids +1x1000spoons/carton
4020-0314-02	33121100SB	E.O.	Blue	Individual flow pack, 400pcs/carton



Without graduation, black cups with attached spoon
Dimension: Ø55 / Ø42 / H70 mm

P/N	CAT.NO.	STERILE	LID COLOR	PACKING
4020-0615-13	3C0046	-	Red	Individually flow pack, 400pcs/carton
4020-0618-13	3C0047	-	Red	* 1x1000cups+2x500lids +1x1000spoons/carton
4020-0614-13	3C0048	E.O.	Red	Individual flow pack, 400pcs/carton
4020-0615-02	3C0049	-	Blue	Individual flow pack, 400pcs/carton
4020-0618-02	3C0050	-	Blue	* 1x1000cups+2x500lids +1x1000spoons/carton
4020-0614-02	3C0051	E.O.	Blue	Individual flow pack, 400pcs/carton



* Lids /Cups/Spoons separately packed in different polybag and in same carton

20ml Containers

P/N	COLOR	PACKING
4020-2701	NATURAL	100pcs/polybag, 1000pcs/carton
4020-2702	BLACK	100pcs/polybag, 1000pcs/carton



Urine and Stool Containers CE IVD

VOL.150 ml

Molded graduation at each 20ml up to 100ml
Dimension: Ø59 / Ø47 / H74 mm

P/N	CAT.NO.	STERILE	LID COLOR	PACKING
4020-0405-13	33101150ND	-	Red	Individual flow pack, 250pcs/carton
4020-0407-13	33101150NB	-	Red	* 1x800cups + 2x400lids/carton
4020-0404-13	33101150SD	E.O.	Red	Individual flow pack, 250pcs/carton
4020-0405-02	33101150BD	-	Blue	Individual flow pack, 250pcs/carton
4020-0407-02	33101150BB	-	Blue	* 1x800cups + 2x400lids/carton
4020-0404-02	33101150SB	E.O.	Blue	Individual flow pack, 250pcs/carton



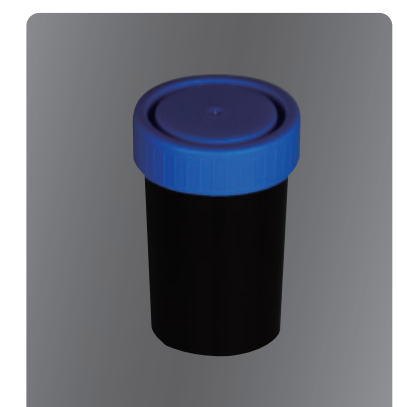
Molded graduation at each 20ml up to 100ml, with attached spoon
Dimension: Ø59 / Ø47 / H74 mm

P/N	CAT.NO.	STERILE	LID COLOR	PACKING
4020-0415-13	33121150ND	-	Red	Individually wrapped, 250pcs/carton
4020-0418-13	33121150NB	-	Red	* 1x800cups+2x400lids +1x800spoons/carton
4020-0414-13	33121150SD	E.O.	Red	Individual flow pack, 250pcs/carton
4020-0415-02	33121150BD	-	Blue	Individual flow pack, 250pcs/carton
4020-0418-02	33121150BB	-	Blue	* 1x800cups+2x400lids +1x800spoons/carton
4020-0414-02	33121150SB	E.O.	Blue	Individual flow pack, 250pcs/carton



Without graduation, black cups with attached spoon
Dimension: Ø59 / Ø47 / H74 mm

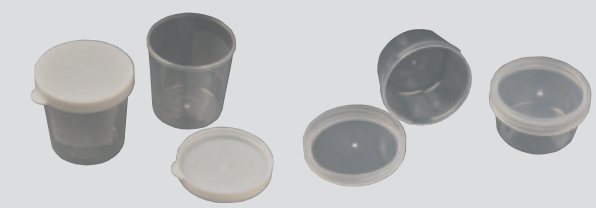
P/N	CAT.NO.	STERILE	LID COLOR	PACKING
4020-0715-13	3C0052	-	Red	Individual flow pack, 250pcs/carton
4020-0718-13	3C0053	-	Red	* 1x800cups+2x400lids +1x800spoons/carton
4020-0714-13	3C0054	E.O.	Red	Individual flow pack, 250pcs/carton
4020-0715-02	3C0055	-	Blue	Individual flow pack, 250pcs/carton
4020-0718-02	3C0056	-	Blue	* 1x800cups+2x400lids +1x800spoons/carton
4020-0714-02	3C0057	E.O.	Blue	Individual flow pack, 250pcs/carton



* Lids /Cups/Spoons separately packed in different polybag and in same carton

30ml Containers

P/N	DESCRIPTION	LID COLOR	PACKING
4020-2601	Molded graduation at each 5ml up to 30ml.	White	Individual flow pack 800 pcs/carton
4020-2602	Without graduation	Natural	Individual flow pack 800 pcs/carton



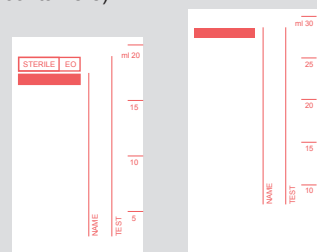
PP material, E.O. sterile

Universal Containers CE IVD

Designed to collect and store solid or liquid samples, as well process by centrifugation

- Translucent PP or transparent PS materials, with assorted color screw cap
- Leak-proof
- Max. centrifugation at 6000xg (PP containers), 4000xg (PS containers)
- Attached spoon optional, suitable for feces sample
- Supplied with or without scale label

Vol.(ml)	Φ1(mm)	Φ2(mm)	H(mm)
30	30	25	93
40	32	27	100



Containers, PP Material

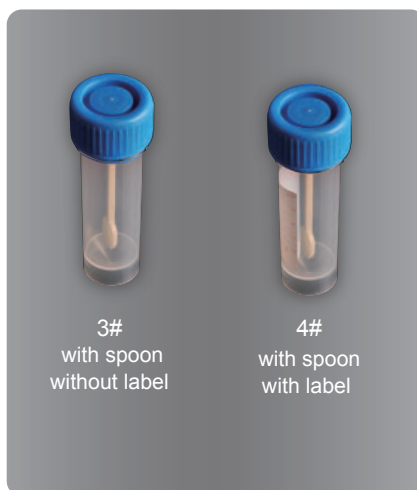
VOL.30ml



without spoon

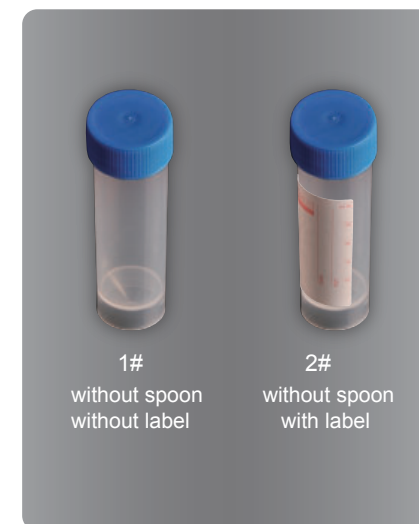
P/N		STERILE	LID COLOR	PACKING
1#	2#			
4020-0805-13	4020-0825-13	-	Red	Individual flow pack, 1000pcs/carton
4020-0806-13	4020-0826-13	-	Red	100pcs/polybag, 5×100pcs/carton
4020-0804-13	4020-0824-13	E.O.	Red	Individual flow pack, 1000pcs/carton
4020-0805-02	4020-0825-02	-	Blue	Individual flow pack, 1000pcs/carton
4020-0806-02	4020-0826-02	-	Blue	100pcs/polybag, 5×100pcs/carton
4020-0804-02	4020-0824-02	E.O.	Blue	Individual flow pack, 1000pcs/carton
4020-0805-16	4020-0825-16	-	White	Individual flow pack, 1000pcs/carton
4020-0806-16	4020-0826-16	-	White	100pcs/polybag, 5×100pcs/carton
4020-0804-16	4020-0824-16	E.O.	White	Individual flow pack, 1000pcs/carton

with spoon



P/N		STERILE	LID COLOR	PACKING
3#	4#			
4020-0815-13	4020-0835-13	-	Red	Individual flow pack, 1000pcs/carton
4020-0816-13	4020-0836-13	-	Red	100pcs/polybag, 5×100pcs/carton
4020-0814-13	4020-0834-13	E.O.	Red	Individual flow pack, 1000pcs/carton
4020-0815-02	4020-0835-02	-	Blue	Individual flow pack, 1000pcs/carton
4020-0816-02	4020-0836-02	-	Blue	100pcs/polybag, 5×100pcs/carton
4020-0814-02	4020-0834-02	E.O.	Blue	Individual flow pack, 1000pcs/carton
4020-0815-16	4020-0835-16	-	White	Individual flow pack, 1000pcs/carton
4020-0816-16	4020-0836-16	-	White	100pcs/polybag, 5×100pcs/carton
4020-0814-16	4020-0834-16	E.O.	White	Individual flow pack, 1000pcs/carton

VOL.40ml



without spoon

P/N		STERILE	LID COLOR	PACKING
1#	2#			
4020-0905-13	4020-0925-13	-	Red	Individual flow pack, 1000pcs/carton
4020-0906-13	4020-0926-13	-	Red	100pcs/polybag, 5×100pcs/carton
4020-0904-13	4020-0924-13	E.O.	Red	Individual flow pack, 1000pcs/carton
4020-0905-02	4020-0925-02	-	Blue	Individual flow pack, 1000pcs/carton
4020-0906-02	44020-0926-02	-	Blue	100pcs/polybag, 5×100pcs/carton
4020-0904-02	4020-0924-02	E.O.	Blue	Individual flow pack, 1000pcs/carton
4020-0905-16	4020-0925-16	-	White	Individual flow pack, 1000pcs/carton
4020-0906-16	4020-0926-16	-	White	100pcs/polybag, 5×100pcs/carton
4020-0904-16	4020-0924-16	E.O.	White	Individual flow pack, 1000pcs/carton

with spoon



P/N		STERILE	LID COLOR	PACKING
3#	4#			
4020-0915-13	4020-0935-13	-	Red	Individual flow pack, 1000pcs/carton
4020-0916-13	4020-0936-13	-	Red	100pcs/polybag, 5×100pcs/carton
4020-0914-13	4020-0934-13	E.O.	Red	Individual flow pack, 1000pcs/carton
4020-0915-02	4020-0935-02	-	Blue	Individual flow pack, 1000pcs/carton
4020-0916-02	4020-0936-02	-	Blue	100pcs/polybag, 5×100pcs/carton
4020-0914-02	4020-0934-02	E.O.	Blue	Individual flow pack, 1000pcs/carton
4020-0915-16	4020-0935-16	-	White	Individual flow pack, 1000pcs/carton
4020-0916-16	4020-0936-16	-	White	100pcs/polybag, 5×100pcs/carton
4020-0914-16	4020-0934-16	E.O.	White	Individual flow pack, 1000pcs/carton

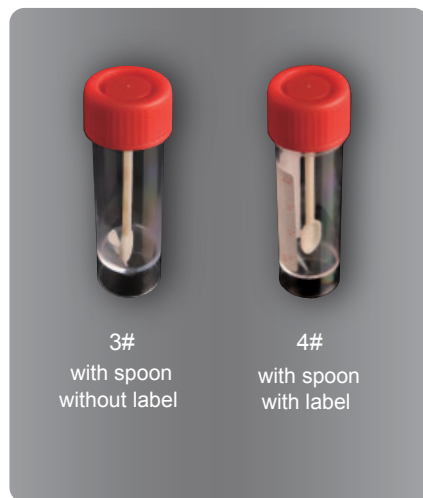
Containers, PS Material

VOL.30ml



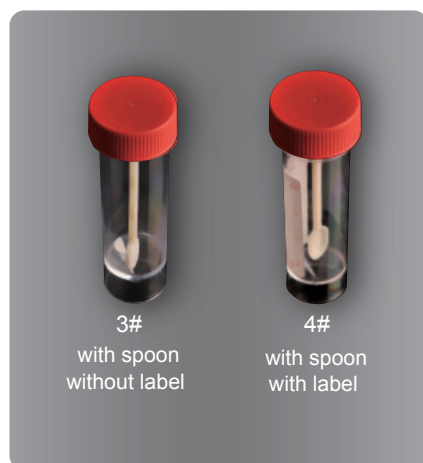
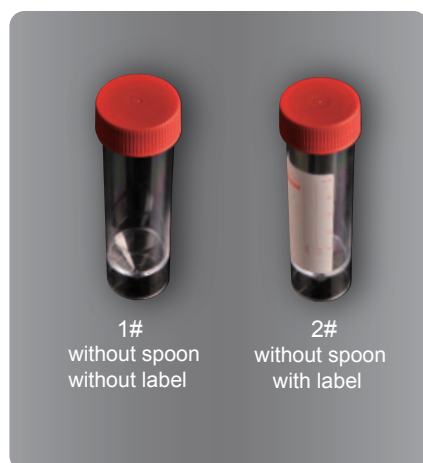
without spoon

P/N		STERILE	LID COLOR	PACKING
1#	2#			
4020-0802-13	4020-0822-13	-	Red	Individual flow pack, 1000pcs/carton
4020-0803-13	4020-0823-13	-	Red	100pcs/polybag, 5×100pcs/carton
4020-0801-13	4020-0821-13	E.O.	Red	Individual flow pack, 1000pcs/carton
4020-0802-02	4020-0822-02	-	Blue	Individual flow pack, 1000pcs/carton
4020-0803-02	4020-0823-02	-	Blue	100pcs/polybag, 5×100pcs/carton
4020-0801-02	4020-0821-02	E.O.	Blue	Individual flow pack, 1000pcs/carton
4020-0802-16	4020-0822-16	-	White	Individual flow pack, 1000pcs/carton
4020-0803-16	4020-0823-16	-	White	100pcs/polybag, 5×100pcs/carton
4020-0801-16	4020-0821-16	E.O.	White	Individual flow pack, 1000pcs/carton



Containers, PS Material

VOL.40ml



with spoon

P/N		STERILE	LID COLOR	PACKING
3#	4#			
4020-0812-13	4020-0832-13	-	Red	Individual flow pack, 1000pcs/carton
4020-0813-13	4020-0833-13	-	Red	100pcs/polybag, 5x100pcs/carton
4020-0811-13	4020-0831-13	E.O.	Red	Individual flow pack, 1000pcs/carton
4020-0812-02	4020-0832-02	-	Blue	Individual flow pack, 1000pcs/carton
4020-0813-02	4020-0833-02	-	Blue	100pcs/polybag, 5x100pcs/carton
4020-0811-02	4020-0831-02	E.O.	Blue	Individual flow pack, 1000pcs/carton
4020-0812-16	4020-0832-16	-	White	Individual flow pack, 1000pcs/carton
4020-0813-16	4020-0833-16	-	White	100pcs/polybag, 5x100pcs/carton
4020-0811-16	4020-0831-16	E.O.	White	Individual flow pack, 1000pcs/carton

without spoon

P/N		STERILE	LID COLOR	PACKING
1#	2#			
4020-0902-13	4020-0922-13	-	Red	Individual flow pack, 1000pcs/carton
4020-0903-13	4020-0923-13	-	Red	100pcs/polybag, 5x100pcs/carton
4020-0901-13	4020-0921-13	E.O.	Red	Individual flow pack, 1000pcs/carton
4020-0902-02	4020-0922-02	-	Blue	Individual flow pack, 1000pcs/carton
4020-0903-02	4020-0923-02	-	Blue	100pcs/polybag, 5x100pcs/carton
4020-0901-02	4020-0921-02	E.O.	Blue	Individual flow pack, 1000pcs/carton
4020-0902-16	4020-0922-16	-	White	Individual flow pack, 1000pcs/carton
4020-0903-16	4020-0923-16	-	White	100pcs/polybag, 5x100pcs/carton
4020-0901-16	4020-0921-16	E.O.	White	Individual flow pack, 1000pcs/carton

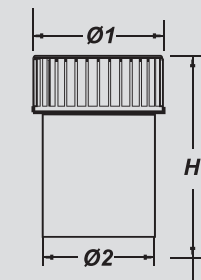
with spoon

P/N		STERILE	LID COLOR	PACKING
3#	4#			
4020-0912-13	4020-0932-13	-	Red	Individual flow pack, 1000pcs/carton
4020-0913-13	4020-0933-13	-	Red	100pcs/polybag, 5x100pcs/carton
4020-0911-13	4020-0931-13	E.O.	Red	Individual flow pack, 1000pcs/carton
4020-0912-02	4020-0932-02	-	Blue	Individual flow pack, 1000pcs/carton
4020-0913-02	4020-0933-02	-	Blue	100pcs/polybag, 5x100pcs/carton
4020-0911-02	4020-0931-02	E.O.	Blue	Individual flow pack, 1000pcs/carton
4020-0912-16	4020-0932-16	-	White	Individual flow pack, 1000pcs/carton
4020-0913-16	4020-0933-16	-	White	100pcs/polybag, 5x100pcs/carton
4020-0911-16	4020-0931-16	E.O.	White	Individual flow pack, 1000pcs/carton

Pre-filling Containers CE IVD

Ideal for pre-filling of histology, pathology or cytology reagent and sample preparation

- Translucent PP material, with assorted color screw cap
- Leak-proof, good temperature and chemical resistance
- Triple molded graduation
- Non-sterile



VOL.(mL)	Φ1(mm)	Φ2(mm)	H1(mm)
30	37	31	44
50	40	34	70
50	50	44	42
80	48	60	64
150	58	52	80
250	65	59	100



30ml Container (Dimension Φ37/Φ31/ H44 mm)
Graduation at each 5ml up to 15ml

P/N	CAT.NO.	DESCRIPTION	LID COLOR	PACKING
4020-1806-13	33101530R	Lids assembled	Red	500pcs/polybag, 2x500pcs/carton
4020-1807-13	33101530RB	Lids/Cups separately packed	Red	2x500cups+1x1000lids/carton
4020-1806-16	33101530W	Lids assembled	White	500pcs/polybag, 2x500pcs/carton
4020-1807-16	33101530WB	* Lids/Cups separately packed	White	2x500cups+1x1000lids/carton
4020-1806-17	33101530Y	Lids assembled	Yellow	500pcs/polybag, 2x500pcs/carton
4020-1807-17	33101530YB	* Lids/Cups separately packed	Yellow	2x500cups+1x1000lids/carton
4020-1806-08	33101530G	Lids assembled	Green	500pcs/polybag, 2x500pcs/carton
4020-1807-08	33101530GB	* Lids/Cups separately packed	Green	2x500cups+1x1000lids/carton
4020-1806-10	33101530O	Lids assembled	Orange	500pcs/polybag, 2x500pcs/carton
4020-1807-10	33101530OB	* Lids/Cups separately packed	Orange	2x500cups+1x1000lids/carton



50ml Container (Dimension Φ40/Φ34/ H70mm)
With triple molded graduation at each 10ml up to 40ml

P/N	CAT.NO.	DESCRIPTION	LID COLOR	PACKING
4020-2006-13	33101050R	Lids assembled	Red	200pcs/polybag, 3x200pcs/carton
4020-2007-13	33101050RB	* Lids/Cups separately packed	Red	3x200cups+1x600lids/carton
4020-2006-16	33101050W	Lids assembled	White	200pcs/polybag, 3x200pcs/carton
4020-2007-16	33101050WB	* Lids/Cups separately packed	White	3x200cups+1x600lids/carton
4020-2006-08	33101050G	Lids assembled	Green	200pcs/polybag, 3x200pcs/carton
4020-2007-08	33101050GB	* Lids/Cups separately packed	Green	3x200cups+1x600lids/carton
4020-2006-17	33101050Y	Lids assembled	Yellow	200pcs/polybag, 3x200pcs/carton
4020-2007-17	33101050YB	* Lids/Cups separately packed	Yellow	3x200cups+1x600lids/carton
4020-2006-10	33101050O	Lids assembled	Orange	200pcs/polybag, 3x200pcs/carton
4020-2007-10	33101050OB	* Lids/Cups separately packed	Orange	3x200cups+1x600lids/carton



150ml Container Dimension Φ58/Φ52/ H80mm
Graduation at each 10ml up to 120ml

P/N	CAT.NO.	DESCRIPTION	LID COLOR	PACKING
4020-2206-13	33102150	Lids assembled	Red	100pcs/polybag, 3x100pcs/carton
4020-2207-13	33102150NB	* Lids/Cups separately packed	Red	3x100cups+1x300lids/carton
4020-2206-16	33102150W	Lids assembled	White	100pcs/polybag, 3x100pcs/carton
4020-2207-16	33102150WB	* Lids/Cups separately packed	White	3x100cups+1x300lids/carton

* Lids and Cups separately packed in different polybag and in same carton

50ml Container (Dimension $\Phi 50/\Phi 44$ / H42mm)
Graduation at each 10ml up to 40ml



P/N	CAT.NO.	DESCRIPTION	LID COLOR	PACKING
4020-1906-13	33104050R	Lids assembled	Red	500pcs/polybag, 2x500pcs/carton
4020-1907-13	33104050RB	* Lids/Cups separately packed	Red	2x500cups+1x1000lids/carton
4020-1906-16	33104050W	Lids assembled	White	500pcs/polybag, 2x500pcs/carton
4020-1907-16	33104050WB	* Lids/Cups separately packed	White	2x500cups+1x1000lids/carton
4020-1906-08	33104050G	Lids assembled	Green	500pcs/polybag, 2x500pcs/carton
4020-1907-08	33104050GB	* Lids/Cups separately packed	Green	2x500cups+1x1000lids/carton
4020-1906-17	33104050Y	Lids assembled	Yellow	500pcs/polybag, 2x500pcs/carton
4020-1907-17	33104050YB	* Lids/Cups separately packed	Yellow	2x500cups+1x1000lids/carton
4020-1906-10	33104050O	Lids assembled	Orange	500pcs/polybag, 2x500pcs/carton
4020-1907-10	33104050OB	* Lids/Cups separately packed	Orange	2x500cups+1x1000lids/carton

* Lids and Cups separately packed in different polybag and in same carton

80ml Container (Dimension $\Phi 50/\Phi 44$ / H61mm)
With triple molded graduation at each 10ml up to 60ml



P/N	CAT.NO.	DESCRIPTION	LID COLOR	PACKING
4020-2106-16	33106080W	Lids assembled	White	250pcs/polybag, 2x250pcs/carton
4020-2107-16	33106080WB	* Lids/Cups separately packed	White	2x250cups+1x500lids/carton
4020-2106-13	33106080R	Lids assembled	Red	250pcs/polybag, 2x250pcs/carton
4020-2107-13	33106080RB	* Lids/Cups separately packed	Red	2x250cups+1x500lids/carton
4020-2106-17	33106080Y	Lids assembled	Yellow	250pcs/polybag, 2x250pcs/carton
4020-2107-17	33106080YB	* Lids/Cups separately packed	Yellow	2x250cups+1x500lids/carton
4020-2106-08	33106080G	Lids assembled	Green	250pcs/polybag, 2x250pcs/carton
4020-2107-08	33106080GB	* Lids/Cups separately packed	Green	2x250cups+1x500lids/carton
4020-2106-10	33106080O	Lids assembled	Orange	250pcs/polybag, 2x250pcs/carton
4020-2107-10	33106080OB	* Lids/Cups separately packed	Orange	2x250cups+1x500lids/carton

* Lids and Cups separately packed in different polybag and in same carton

250ml Container (Dimension $\Phi 65/\Phi 59$ / H100mm)
Graduation at each 10ml up to 120ml

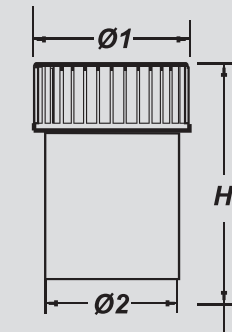


P/N	CAT.NO.	DESCRIPTION	LID COLOR	PACKING
4020-2306-13	33102250	Lids assembled	Red	100pcs/polybag, 2x100pcs/carton
4020-2307-13	33102250NB	* Lids/Cups separately packed	Red	2x100cups+1x200lids/carton
4020-2306-16	33102250W	Lids assembled	White	100pcs/polybag, 2x100pcs/carton
4020-2307-16	33102250WB	* Lids/Cups separately packed	White	2x100cups+1x200lids/carton

* Lids and Cups separately packed in different polybag and in same carton

Leak-proof Containers CE IVD

Leak-tested in accordance with **BS EN 14254** and **BS 5213**, 95kPa-compliance are guaranteed able to transport infectious and diagnosis sample, according to the IATA and UN (United Nations) packaging directive 602/650 requirements



VOL. (mL)	1(mm)	2(mm)	H1(mm)
25, PP*	30	27	55
30, PP*	37	31	44
30, PS*	30	24	94
50, PP	50	44	42
50, PP*	40	34	70
60, PS	44	38	61
80, PP*	50	44	61

* Passes 95kPa test

What's 95kPa?

Safer storage and transportation of samples, especially for biological samples, has been critical, owing to the risk of potentially hazardous substances. Therefore the containers should be complied with the transport regulations, such as those recommended by the International Civil Aviation Organization (ICAO) and the International Air transport association (IATA). These require the primary or secondary packing to be able to withstand an internal differential pressure of 95kPa without leakage. A pressure of 95kPa is 0.95bar (1 bar being equivalent to atmospheric pressure at sea leakage). 95kPa test is according to ASTM D4991 Standard test method for leakage testing of empty rigid containers by vacuum method.

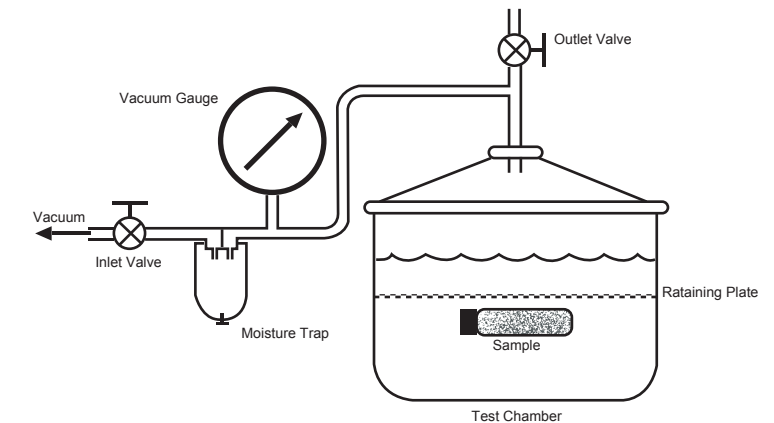


FIG.1 Typical Test Setup for Leakage Testing of Containers by Vacuum Method

- Immerse the test specimens in water inside the vacuum chamber. The uppermost surface of the specimen shall be covered by not less than 25mm of fluid.
- Turn on the vacuum so that the gage rises slowly (from 30 s to 1min) to a pressure differential of 95 kPa (13.8 psi).
- Maintain the vacuum for a minimum of 10 min.
- Turn the vacuum off and release it slowly by opening the hand valve on the outlet tube, and keep the specimens immersed for at least 30 s at ambient pressure.
- Remove the test specimens and examine the inside for fluid.
- The container is observed for signs of leakage, as evidenced by escaping air bubbles during depressurization or fluid in the container after re-pressurization.

Cautions: Proper torquing of closures is critical to leakproof sealing

Leak-proof Containers, PS Material

NEW

Used to collect and transport biological samples, especially for infectious and diagnosis samples



- Transparent PS material, with PE screw cap
- Leak test standards are BS EN 14254 and BS 5213
- 95kPa-compliance ensures complete leak-proof and suitability for transport

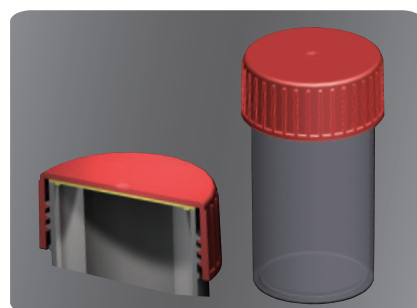
P/N	VOL.(mL)	DIMENSION(mm)	LID COLOR	PACKING
* 4020-1501-16	30	24.0/ 30.0/ H 94.0	White	Individual flow pack, 1000pcs/carton
* 4020-1503-16	30	24.0/ 30.0/ H 94.0	White	100pcs/polybag, 5x100pcs/carton
4020-1601-16	60	38.5/ 44.0/ H 61.0	White	Individual flow pack, 1000pcs/carton
4020-1603-16	60	38.5/ 44.0/ H 61.0	White	100pcs/polybag, 5x100pcs/carton

* Passes 95kPa test

Leak-proof Container, PP Material

Specifically designed for solvents and samples, involve pathological, histological and cytological, such as formalin solution

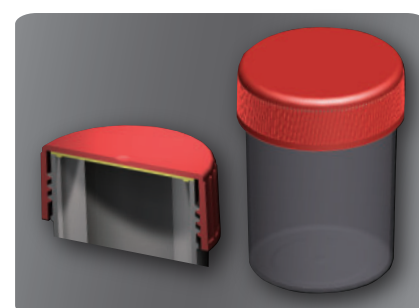
- Translucence PP material, with assorted color crew cap
- Good temperature and chemical resistance
- Leak-proof, passed the 95kPa test



25ml container (DimensionΦ30/Φ27/ H 55 mm)
Without graduation

P/N	CAT.NO.	DESCRIPTION	LID COLOR	PACKING
4020-1006-13	33101225R	Lids assembled	RED	500pcs/polybag, 2x500pcs/carton
4020-1007-13	33101225RB	* Lids/Cups separately packed	RED	2x500cups +1x1000lids/carton
4020-1006-16	33101225W	Lids assembled	WHITE	500pcs/polybag, 2x500pcs/carton
4020-1007-16	33101225WB	* Lids/Cups separately packed	WHITE	2x500cups +1x1000lids/carton
4020-1006	33101225N	Lids assembled	NEUTRAL	500pcs/polybag, 2x500pcs/carton
4020-1007	33101225NB	* Lids/Cups separately packed	NEUTRAL	2x500cups +1x1000lids/carton
4020-1006-17	33101225Y	Lids assembled	YELLOW	500pcs/polybag, 2x500pcs/carton
4020-1007-17	33101225YB	* Lids/Cups separately packed	YELLOW	2x500cups +1x1000lids/carton
4020-1006-08	33101225G	Lids assembled	GREEN	500pcs/polybag, 2x500pcs/carton
4020-1007-08	33101225GB	* Lids/Cups separately packed	GREEN	2x500cups +1x1000lids/carton
4020-1006-10	33101225O	Lids assembled	ORANGE	500pcs/polybag, 2x500pcs/carton
4020-1007-10	33101225OB	* Lids/Cups separately packed	ORANGE	2x500cups +1x1000lids/carton

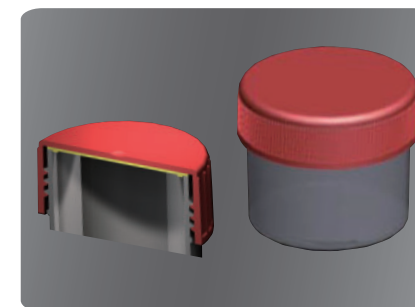
* Lids and Cups separately packed in different polybag and in same carton



30ml container (DimensionΦ37/Φ31/ H44 mm)
With triple molded graduation at each 5ml up to 20ml

P/N	DESCRIPTION	LID COLOR	PACKING
4020-1506-13	Lids assembled	RED	500pcs/polybag, 2x500pcs/carton
4020-1507-13	* Lids/Cups separately packed	RED	2x500cups +1x1000lids/carton
4020-1506-16	Lids assembled	WHITE	500pcs/polybag, 2x500pcs/carton
4020-1507-16	* Lids/Cups separately packed	WHITE	2x500cups +1x1000lids/carton
4020-1506	Lids assembled	NEUTRAL	500pcs/polybag, 2x500pcs/carton
4020-1507	* Lids/Cups separately packed	NEUTRAL	2x500cups +1x1000lids/carton
4020-1506-17	Lids assembled	YELLOW	500pcs/polybag, 2x500pcs/carton
4020-1507-17	* Lids/Cups separately packed	YELLOW	2x500cups +1x1000lids/carton
4020-1506-08	Lids assembled	GREEN	500pcs/polybag, 2x500pcs/carton
4020-1507-08	* Lids/Cups separately packed	GREEN	2x500cups +1x1000lids/carton
4020-1506-10	Lids assembled	ORANGE	500pcs/polybag, 2x500pcs/carton
4020-1507-10	* Lids/Cups separately packed	ORANGE	2x500cups +1x1000lids/carton

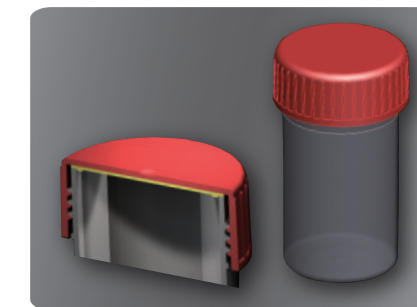
* Lids and Cups separately packed in different polybag and in same carton



50ml container (DimensionΦ50/Φ44/ H42mm)
With triple molded graduation at each 10ml up to 40ml

P/N	CAT.NO.	DESCRIPTION	LID COLOR	PACKING
4020-1206-13	33102050R	Lids assembled	RED	200pcs/polybag, 3x200pcs/carton
4020-1207-13	33102050RB	* Lids/Cups separately packed	RED	3x200cups +1x600lids/carton
4020-1206-16	33102050W	Lids assembled	WHITE	200pcs/polybag, 3x200pcs/carton
4020-1207-16	33102050WB	* Lids/Cups separately packed	WHITE	3x200cups +1x600lids/carton
4020-1206	33102050N	Lids assembled	NEUTRAL	200pcs/polybag, 3x200pcs/carton
4020-1207	33102050NB	* Lids/Cups separately packed	NEUTRAL	3x200cups +1x600lids/carton
4020-1206-17	33102050Y	Lids assembled	YELLOW	200pcs/polybag, 3x200pcs/carton
4020-1207-17	33102050YB	* Lids/Cups separately packed	YELLOW	3x200cups +1x600lids/carton
4020-1206-08	33102050G	Lids assembled	GREEN	200pcs/polybag, 3x200pcs/carton
4020-1207-08	33102050GB	* Lids/Cups separately packed	GREEN	3x200cups +1x600lids/carton
4020-1206-10	33102050O	Lids assembled	ORANGE	200pcs/polybag, 3x200pcs/carton
4020-1207-10	33102050OB	* Lids/Cups separately packed	ORANGE	3x200cups +1x600lids/carton

* Lids and Cups separately packed in different polybag and in same carton

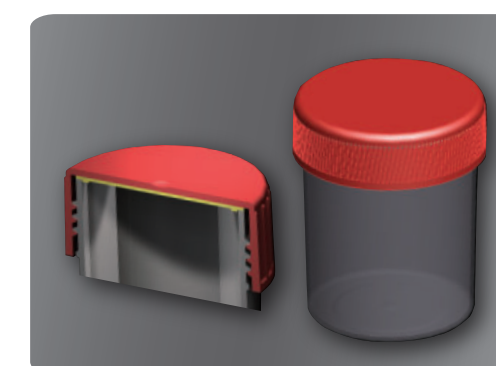


50ml container (DimensionΦ40/Φ34/ H70mm)
With triple molded graduation at each 10ml up to 40ml

P/N	CAT.NO.	DESCRIPTION	LID COLOR	PACKING
4020-1306-13	33112050R	Lids assembled	Red	200pcs/polybag, 3x200pcs/carton
4020-1307-13	33112050RB	* Lids/Cups separately packed	Red	3x200cups +1x600lids/carton
4020-1306-16	33112050W	Lids assembled	White	200pcs/polybag, 3x200pcs/carton
4020-1307-16	33112050WB	* Lids/Cups separately packed	White	3x200cups +1x600lids/carton
4020-1306	33112050N	Lids assembled	Neutral	200pcs/polybag, 3x200pcs/carton
4020-1307	33112050NB	* Lids/Cups separately packed	Neutral	3x200cups +1x600lids/carton
4020-1306-17	33112050Y	Lids assembled	Yellow	200pcs/polybag, 3x200pcs/carton
4020-1307-17	33112050YB	* Lids/Cups separately packed	Yellow	3x200cups +1x600lids/carton
4020-1306-08	33112050G	Lids assembled	Green	200pcs/polybag, 3x200pcs/carton
4020-1307-08	33112050GB	* Lids/Cups separately packed	Green	3x200cups +1x600lids/carton
4020-1306-10	33112050O	Lids assembled	Orange	200pcs/polybag, 3x200pcs/carton
4020-1307-10	33112050OB	* Lids/Cups separately packed	Orange	3x200cups +1x600lids/carton

* Lids and Cups separately packed in different polybag and in same carton

80ml container (DimensionΦ50/Φ44/ H61mm)
With triple molded graduation at each 10ml up to 60ml



P/N	CAT.NO.	DESCRIPTION	LID COLOR	PACKING
4020-1406-13	33102080R	Lids assembled	Red	250pcs/polybag, 2x250pcs/carton
4020-1407-13	33102080RB	* Lids/Cups separately packed	Red	2x250cups +1x500lids/carton
4020-1406-16	33102080W	Lids assembled	White	250pcs/polybag, 2x250pcs/carton
4020-1407-16	33102080WB	* Lids/Cups separately packed	White	2x250cups +1x500lids/carton
4020-1406	33102080N	Lids assembled	Neutral	250pcs/polybag, 2x250pcs/carton
4020-1407	33102080NB	* Lids/Cups separately packed	Neutral	2x250cups +1x500lids/carton
4020-1406-17	33102080Y	Lids assembled	Yellow	250pcs/polybag, 2x250pcs/carton
4020-1407-17	33102080YB	* Lids/Cups separately packed	Yellow	2x250cups +1x500lids/carton
4020-1406-08	33102080G	Lids assembled	Green	250pcs/polybag, 2x250pcs/carton
4020-1407-08	33102080GB	* Lids/Cups separately packed	Green	2x250cups +1x500lids/carton
4020-1406-10	33102080O	Lids assembled	Orange	250pcs/polybag, 2x250pcs/carton
4020-1407-10	33102080OB	* Lids/Cups separately packed	Orange	2x250cups +1x500lids/carton

* Lids and Cups separately packed in different polybag and in same carton

Disposable Cup

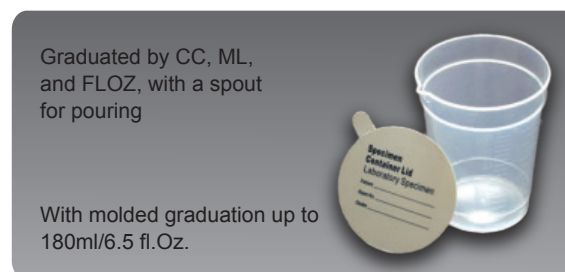
Designed to dispense liquid or dry contents, e.g. medicine

Medicine Cups, PP Material



P/N	VOL.(mL)	PACKING
4085-0000	30	500pcs/bag, 50 x 500pcs/carton

Specimen Cups, PP Material



P/N	CAT.NO.	DESCRIPTION	PACKING
4200-0180	33102180	Overall vol.190ml,	25pcs/sleeve, 20x25pcs/carton
4215-0001	63102180	Optional cardboard lid for #33102180(4020-0180).	25pcs/polybag, 25x40bags/carton



Sampling Vial

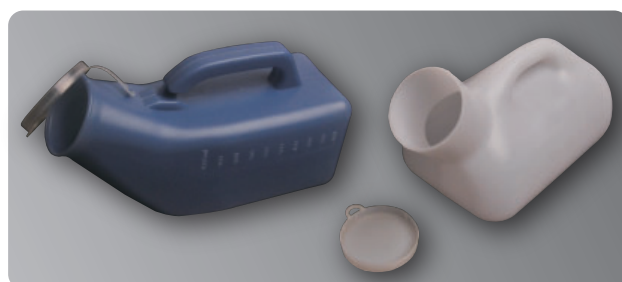
Specially designed for milk and food samples collection, conservation and transport

- Transparent PP material, easy to observe sample
- Hinged sealing lid, easy to one handed operation
- Autoclavable and reusable

P/N	CAT.NO.	DESCRIPTION	PACKING
4020-2401	33130045	45ml/2oz, I.D.23*84mm	200ea./polybag, 3x200ea./carton

Container for Urine Sample

Used for 24 hour urine collection and any other liquid samples

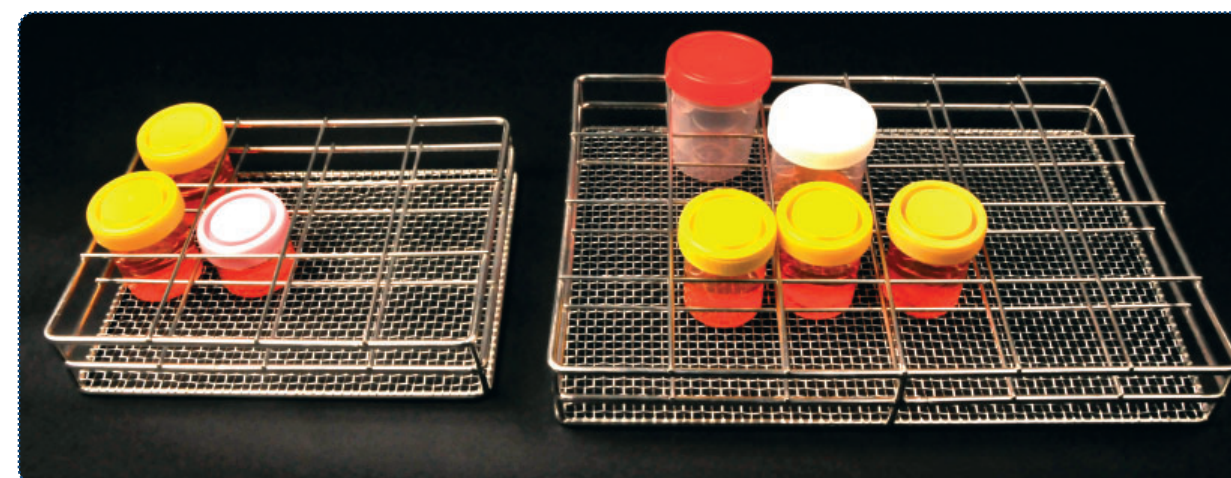
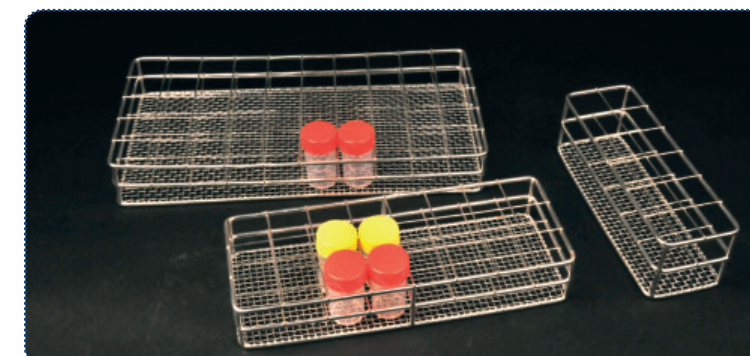
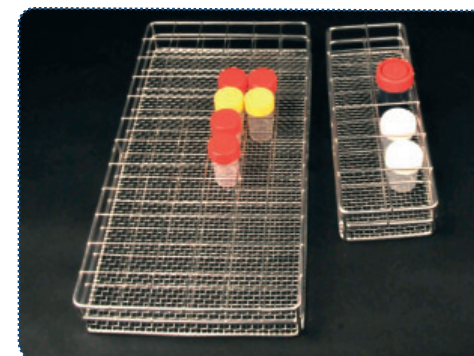


- HDPE material, with molded graduations up to 1 liter
- Ergonomic design, include a convenient handle for an easy single-handed use

P/N	DESCRIPTION	VOL.	PACKING
5601-0001	Blue containers with Transparent Lids	1000mL	40pcs/carton
5601-0002	White containers with White Lids	1000mL	40pcs/carton

Container Racks

Stainless Steel, Wire Constructed



P/N	PLACE LAYOUT	MAX. TUBEø (mm)	DIM. (mm)	N.W. (kg)	VOL. (m ³)	PACKING
4051-0001	12 (2x6)	27	198 x 68 x 45	0.199	0.0006	64pcs /carton
4051-0002	24 (3x8)	27	261 x 104 x 45	0.310	0.0012	36pcs /carton
4051-0003	50 (5 x 10)	27	325 x 167 x 45	0.481	0.0024	24pcs /carton
4051-0004	72(6x12)	27	391 x 197 x 45	0.630	0.0035	15pcs /carton
4051-0005	12 (2x6)	40	276 x 97 x 45	0.449	0.0012	24pcs /carton
4051-0006	32 (4x8)	40	368 x 187 x 45	0.836	0.0031	12pcs /carton
4051-0007	12 (3 x 4)	50	224 x 171 x 45	0.489	0.0017	24pcs /carton
4051-0008	24(4x6)	50	335 x 228 x 45	0.813	0.0034	12pcs /carton

Reagent Bottles NEW

CITOTEST® Plastic bottle series is a new line of sample handling products, delivers an effective solution to your lab safety. Plastic ware won't shatter like glass, no chipping or sharp edges making it more safety for personal; Meanwhile, Plastic ware is lighter weight and easier to handle than glass, making it more ergonomic in busy laboratory environments.

Round Bottles, HDPE Material

Multi-use bottles, ideal for transporting samples and containing daily working solutions like buffers, bench reagents or dry materials



Narrow-Mouth

P/N	CAPACITY (mL)	CLOSURE SIZE (mm)	PACKING
4044-0408	8	20	12 each/dispenser box, 12x12each/carton
4044-0415	15	20	12 each/dispenser box, 12x12each/carton

- Linerless caps ensure leakproof and free from contamination
- Excellent chemical resistance to most of acids, bases and alcohols
- Can be used in a freezer down to -70°C (-94°F)

P/N	CAPACITY (mL)	CLOSURE SIZE (mm)	PACKING
4044-0425	25	20	12 each/dispenser box, 12x12each/carton
4044-0430	30	20	12 each/dispenser box, 12x12each/carton
4044-0450	50	20	6 each/dispenser box, 12x6 each/carton
4044-0460	60	20	6 each/dispenser box, 12x6 each/carton
4044-0441	100	24	6 each/dispenser box, 12x6 each/carton
4044-0451	125	24	6 each/dispenser box, 12x6 each/carton
4044-0461	150	24	6 each/dispenser box, 12x6 each/carton
4044-0442	200	24	6 each/dispenser box, 6x6 each/carton
4044-0452	250	24	6 each/dispenser box, 6x6 each/carton
4044-0471	500	28	6 each/dispenser box, 4x6 each/carton
4044-0481	1000	38	4 each/dispenser box, 4x4 each/carton



Wide-Mouth

P/N	CAPACITY (mL)	CLOSURE SIZE (mm)	PACKING
4044-0115	15	28	12 each/dispenser box, 12x12each/carton

P/N	CAPACITY (mL)	CLOSURE SIZE (mm)	PACKING
4044-0125	25	28	12 each/dispenser box, 12x12each/carton
4044-0130	30	28	12 each/dispenser box, 12x12each/carton
4044-0150	50	28	6 each/dispenser box, 12x6 each/carton
4044-0160	60	28	6 each/dispenser box, 12x6 each/carton
4044-0141	100	38	6 each/dispenser box, 12x6 each/carton
4044-0151	125	38	6 each/dispenser box, 12x6 each/carton
4044-0161	150	38	6 each/dispenser box, 12x6 each/carton
4044-0142	200	43	6 each/dispenser box, 6x6 each/carton
4044-0152	250	43	6 each/dispenser box, 6x6 each/carton
4044-0171	500	53	6 each/dispenser box, 4x6 each/carton
4044-0181	1000	63	4 each/dispenser box, 4x4 each/carton

Round Bottles, PTFE Material

Excellent chemical resistance, use up to 250 °C



Narrow-Mouth

P/N	CAPACITY(mL)	PACKING
4041-0050	50	12 each/dispenser box, 12x12each/carton
4041-0100	100	12 each/dispenser box, 4x12each/carton
4041-0250	250	12 each/dispenser box, 4x12each/carton
4041-0500	500	8 each/dispenser box, 6x8 each/carton
4041-1000	1000	6 each/dispenser box, 4x6 each/carton



Wide-Mouth

P/N	CAPACITY(mL)	PACKING
4042-0050	50	12 each/dispenser box, 12x12each/carton
4042-0100	100	12 each/dispenser box, 4x12each/carton
4042-0250	250	12 each/dispenser box, 4x12each/carton
4042-0500	500	8 each/dispenser box, 6x8 each/carton
4042-1000	1000	6 each/dispenser box, 4x6 each/carton

Round Bottle with Screw Cap, Glass Material

Suitable for general purpose laboratory applications, such as storage, sample preparation, transport, autoclaving media

Compliance with ISO 4796 Laboratory glassware –Bottle

- With DIN thread GL 45, pouring ring and PP screw cap
- Excellent chemical resistance
- Minimal thermal expansion
- High resistance to thermal shocks, autoclavable
- Transparent –contents and volume can be quickly checked
- Easy labeling-thanks to large labeling field
- Practicality-easy to read, permanent graduations

Clear Glass

P/N	CAT.NO.	VOL. (ml)	MOUTH (mm)	DIMENSIONS (mm)	PACKING
4037-0100-02	14070100	100	30	Ø56x100	120each/pack
4037-0250-02	14070250	250	30	Ø70x138	48each/pack
4037-0500-02	14070500	500	30	Ø86x176	24each/pack
4037-1000-02	14071000	1000	30	Ø101x225	20each/pack

Borosilicate Glass 3.3

P/N	CAT.NO.	VOL. (ml)	MOUTH (mm)	DIMENSIONS (mm)	PACKING
4038-0100-02	14170100	100	30	Ø56x100	120 each/pack
4038-0250-02	14170250	250	30	Ø70x138	48 each/pack
4038-0500-02	14170500	500	30	Ø86x176	24each/pack
4038-1000-02	14171000	1000	30	Ø101x225	20each/pack



Square Bottles, HDPE Material

Suitable for a wide range of lab uses, such as transporting samples and containing daily working solutions like buffers, bench reagents and dry materials

- Space-saving shape, with molded graduation for ease of dispensing
- Linerless caps ensure leakproof and free from contamination
- Excellent chemical resistance to most of acids, bases and alcohols
- Can be used in a freezer down to -70°C (-94°F)



Narrow-Mouth

P/N	CAPACITY (mL)	CLOSURE SIZE (mm)	PACKING
* 4044-0510	10	20	12 each/dispenser box, 12x12each/carton
4044-0525	25	20	12 each/dispenser box, 12x12each/carton
4044-0530	30	20	12 each/dispenser box, 12x12each/carton
* 4044-0550	50	24	12 each/dispenser box, 12x12each/carton
4044-0560	60	24	12 each/dispenser box, 12x12each/carton
* 4044-0541	100	38	6 each/dispenser box, 12x6 each/carton
4044-0551	125	38	6 each/dispenser box, 12x6 each/carton
4044-0552	250	38	6 each/dispenser box, 6x6 each/carton
4044-0571	500	38	6 each/dispenser box, 4x6 each/carton
4044-0581	1000	38	4 each/dispenser box, 4x4 each/carton

* Without molded graduations

Wide-Mouth, without molded graduations

P/N	CAPACITY (mL)	CLOSURE SIZE (mm)	NECK I.D.(mm)	DIMENSION (HxLxW mm)	PACKING
4044-0260	60	28	21	83x37x37	12 each/dispenser box, 12x12each/carton
4044-0272	175	38	28	106x52x52	6 each/dispenser box, 6x6 each/carton
4044-0252	250	43	33	116x62x62	6 each/dispenser box, 6x6 each/carton
4044-0271	500	53	43	146x75x75	6 each/dispenser box, 4x6 each/carton
4044-0281	1000	63	53	181x95x95	4 each/dispenser box, 4x4 each/carton

Rectangular Bottles, HDPE Material

Suitable for transporting and storing both liquids and dry materials, wide-mouth for easy pouring

- Excellent chemical resistance to most of acids, bases and alcohols
- Linerless closures ensure leakproof and free from contamination
- Can be used in a freezer down to -70°C (-94°F)



P/N	CAPACITY (mL)	CLOSURE SIZE (mm)	NECK I.D.(mm)	DIMENSION (HxLxW mm)	PACKING
4044-0351	125	28	21	102x64x38	12 each/dispenser box, 6x12each/carton
4044-0372	175	38	28	114x64x38	12 each/dispenser box, 6x12each/carton
4044-0352	250	38	28	114x76x48	12 each/dispenser box, 6x12each/carton
4044-0371	500	48	37	140x94x58	12 each/dispenser box, 4x12each/carton
4044-0381	1000	53	44	180x125x81	6 each/dispenser box, 4x6each/carton
4044-0382	2000	63	51	239x152x81	4 each/dispenser box, 3x4each/carton

Reagent Bottles with Stoppers

Ideal for long-term storage of liquids in general laboratory

- Autoclavable PP material, excellent chemical resistance
- NS stoppers help prevent leakage
- Slope-shouldered, with ground joint and interchangeable stopper
- Wide mouth for simple filling, also ideal for powders and paste-like materials



Narrow mouth

P/N	CAPACITY (mL)	NECK SIZE	DIA. (mm)	HEIGHT (mm)	PACKING
4044-4441	100	14/23	52	106	12 each/dispenser box, 4x12each/carton
4044-4452	250	19/26	70	138	12 each/dispenser box, 4x12each/carton
4044-4471	500	24/29	76	172	6 each/dispenser box, 4x6 each/carton
4044-4481	1000	29/32	108	213	1 each/dispenser box, 6x1 each/carton
4044-4482	2000	29/32	131	255	1 each/dispenser box, 4x1 each/carton

Wide mouth

P/N	CAPACITY (mL)	NECK SIZE	DIA. (mm)	HEIGHT (mm)	PACKING
4044-4141	100	29/32	55	111	12 each/dispenser box, 4x12each/carton
4044-4152	250	34/35	73	144	12 each/dispenser box, 4x12each/carton
4044-4171	500	45/40	87	183	6 each/dispenser box, 4x6 each/carton
4044-4181	1000	60/46	108	214	1 each/dispenser box, 6x1 each/carton
4044-4182	2000	60/46	131	263	1 each/dispenser box, 4x1 each/carton

Carboys with Spigot, HDPE Material

Suitable for collecting and dispensing distilled water, reagent and acids in laboratory

- Molded in graduations in 1 gal and 5L increments for ease in dispensing
- Molded in spigot provides strength and leak resistance
- Convenient wide shoulder handles
- Leakproof

P/N	CAPACITY (L)	MAX. CAPACITY(L)	CLOSURE SIZE (mm)	PACKING
4093-0191	5	5.5	38	1 each/dispenser box, 6x1 each/carton
4093-0192	10	12	38	1 each/dispenser box, 6x1 each/carton
4093-0194	20	22.5	83	1 each/dispenser box, 2x1 each/carton
4093-0195	25	27.5	83	1 each/dispenser box, 1x1 each/carton



Aspirator Bottles, Glass Material

Suitable for delivering or storing solutions, and sediment solid or suspended particles in liquid materials

Compliance with ISO 4796-3 Laboratory glassware - Bottles-Part 3: Aspirator bottles

- Clear glass material, with standard ground joint stopper or stopcock suited for dosing of liquids
- Excellent chemical resistance
- Low thermal expansion

P/N		VOL. (ml)	DIA. OF NECK (mm)	DIA. OF LOWER MOUTH(mm)	H (mm)	PACKING
WITHOUT STOPCOCK	WITH STOPCOCK					
4092-2500	4090-2500	2500	48	30	270	1 each/dispenser box, 12x1 each/carton
4092-5000	4090-5000	5000	58	32	345	1 each/dispenser box, 6x1 each/carton
4092-5001	4090-5001	10000	68	35	420	1 each/dispenser box, 4x1each/carton
4092-5003	4090-5003	20000	82	38	500	1 each/dispenser box, 2x1 each/carton



Safety Wash Bottle

Suitable for handling hazardous chemicals in an easily recognizable format

LDPE bottle, PP or HDPE closures, PPCO draw tube
Compliance with BS 5404-4 Specification for laboratory ware-Wash bottles

HAZARDOUS MATERIALS CLASSIFICATION

Health Hazard

- ☐ Deadly
- ☐ Extreme Dander
- ☐ Hazardous
- ☐ Slightly Hazardous
- ☐ Normal Material

Fire Hazard

Flash Points

- ☐ Below 23°F
- ☐ Above 100°F
- ☐ Between 100°F and 200°F
- ☐ Above 200°F
- ☐ Not Flammable

Reactivity

- ☐ May Detonate
- ☐ Shock/Heat May Detonate
- ☐ Violent Chemical Change
- ☐ Unstable if Heated
- ☐ Stable

Specific Hazard

- ACID - Acid
- ALK - Alkali
- CDR - Corrosive
- OXY - Oxidizer
- RA - Radioactive
- W - Use No Water



- Self-venting, but contents stay in the bottle with no risk of leakage
- Including Chemical name, ICS, GHS, CAS numbers, NFPA codes and symbols, and target organs information
- Colored bar corresponds to its colored closure to prevent cross-contamination

Packing: 1 each/dispenser box, 24 each/carton

P/N	CLOSURE SIZE (mL)	CHEMICAL LABEL	COLOR
5511-1171	28	Acetone	Red
5511-1271	28	Ethyl alcohol	White
5511-1371	28	Methanol	Green
5511-1471	28	Isopropanol	Yellow
5511-1571	28	Distilled Water	Natural
5511-1671	28	Sodium Hypochlorite	White

Packing: 6 each/dispenser box, 4x6 each/carton

P/N	CLOSURE SIZE (mL)	CHEMICAL LABEL	COLOR
5511-0171	28	Acetone	Red
5511-0271	28	Ethyl alcohol	White
5511-0371	28	Methanol	Green
5511-0471	28	Isopropanol	Yellow
5511-0571	28	Distilled Water	Natural
5511-0671	28	Sodium Hypochlorite	White

Packing: 1 set/dispenser box, 4 sets/carton

P/N	CLOSURE SIZE (mL)	DESCRIPTION
5511-9971	28	Six safety wash bottles, respectively printed acetone, ethyl alcohol, Methanol, Isopropanol, Distilled Water and Sodium Hypochlorite

Economy Wash Bottles

LDPE bottle, PP or HDPE closures, PPCO draw tube

Compliance with BS 5404-4 Specification for laboratory ware-Wash bottles

- With a closure and stem molded in one piece for leakproof service
- Tight fit of draw tube and closure prevents separation when squeezing bottle
- Wide-mouth design is easy for filling



Narrow mouth

P/N	CAPACITY (mL)	CLOSURE SIZE (mm)	PACKING
5511-4152	250	24	6 each/dispenser box, 6x6 each/carton
5511-4171	500	24	6 each/dispenser box, 4x6 each/carton
5511-4181	1000	38	4 each/dispenser box, 3x4 each/carton

Wide mouth

P/N	CAPACITY (mL)	CLOSURE SIZE (mm)	PACKING
5511-6152	250	38	6 each/dispenser box, 6x6 each/carton
5511-6171	500	43	6 each/dispenser box, 4x6 each/carton
5511-6181	1000	43	4 each/dispenser box, 3x4 each/carton

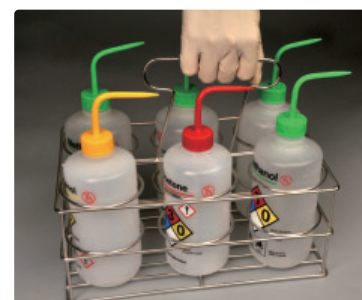
Wash Bottle Bracket

NEW

STAINLESS STEEL Material

Resistant to universal chemicals ; Ingenious handle design makes it easy to move

P/N	PLACE LAYOUT	MAX. BOTTLE (mm)	DIM. (mm)	PACKING
4050-4511	6(2x3)	75	290x185x235	1pc/bag



Liquid Handling

Pipette tip & racks

Eppendorf Type
Gilson Type
Other Type
Pipette Tip Racks

Mechanical pipettor

Single-channel Pipettes
Multi-channel Pipettes
Pipette Stand
Pipette Reservoir

Pasteur pipette

Glass Pasteur Pipette
Plastic Pasteur Pipette

Pipettes

Measuring pipettes
Serological pipettes
Volumetric Pipettes

Pipette controller

Rubber Bulb
Rubber Pipette Filler
Pipette Pump
Levo Pipette Controller
Levo Plus Motorized Pipette Filler

Burette

Burette with Rubber Tubing Connector
Burette with Stopcock

Dropping bottle

